

# Große Orangerie

SCHLOSS CHARLOTTENBURG

*It's the uniqueness that lets*

*an experience become an event*

According to this motto we support you  
in making your event unique  
and create an unforgettable happening



**Orangerie Berlin  
GmbH**

Spandauer Damm 22-24  
14059 Berlin

**Contact Person**

**Maximilian Klemme**

maximilian.klemme

@orangerie.berlin

Fon +49 (0)30 258 10 35 123

Fax +49 (0)30 258 10 35 200

[www.orangerie.berlin](http://www.orangerie.berlin)



# Große Orangerie

SCHLOSS CHARLOTTENBURG

## Celebrate like a King



The majestic atmosphere of the pretentious venue in the last remaining Palace of Berlin, Charlottenburg Palace, ensures the astonishment of all your guests. The special architecture, the scenic gardens, light-flooded ballrooms combined with modern technology, first class service and an excellent catering concept add a unique and individual profile to your event.

Celebrate festivals that will be remembered!

Where tradition meets modernity your event becomes an unforgettable experience.

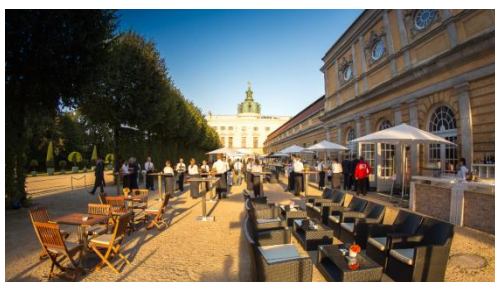
## Location



No matter if product presentation, exhibition or gala dinner, your guests will experience the magnificent setting of a stunning location. In the majestic flair, special moments receive the decisive glamour which is necessary to stay in mind for a long time.

## The Halls

The light flooded ballrooms of the Eastern and Western Wing are well suited for festivities of all kind. The gorgeous Rotunda in the middle of the Great Orangerie offers a glamorous setting for classy welcome receptions. It opens up to the grand side wings which are designed in elegant white.



The splendid Palace complex is surrounded by a baroque garden. It lies on the left hand side of Spree River and can be reached across the water. The shipping pier "Schlossbrücke" is located next to Charlottenburg Palace and is therefore well suited for being the end point of an impressive boat trip.

Due to its extensive terrace area the Great Orangerie is also an ideal summer venue and thereby suitable for open-air events.



# Große Orangerie

SCHLOSS CHARLOTTENBURG

## Technical information

### Area

Total inside area	1.150m <sup>2</sup> ,	Ceiling Height 6m
2 Galleries (Western Wing, Eastern Wing)	56m x 8m (448m <sup>2</sup> ) each	Ceiling height 6m
Rotunda	20m x 13m (260m <sup>2</sup> )	Ceiling Height 7m
Orangery Garden	154m x 13m (2.015m <sup>2</sup> )	

### Capacities

	Total inside area (Western, Eastern Wing, Rotunda)	Each Wing
Round Gala Tables	600 people	300 people
Long Tables	480 people	240 people
Stand-up receptions	1.000 people	500 people

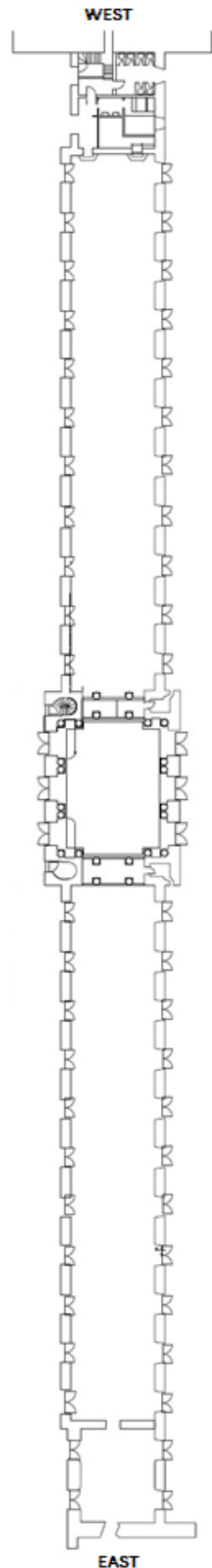
### Stage

Total Size	48m <sup>2</sup> (modification possible), stage height 80cm
------------	---

### Orangery Garden

The utilisation for marquees, also including kitchen equipment, lounges and stand-up receptions is possible on demand.

*All rooms of the event location are easily accessible for people with impairments.*





# Große Orangerie

SCHLOSS CHARLOTTENBURG

## Additional Services

### Catering



Whatever you expect, our catering partners will exceed it!  
Our preferred catering partners create appropriate treats for your guests depending on the occasion, the demand and the extent of your event. On request we provide the contact information. Since we are not bound exclusively to one service partner, you are free to entrust the service partner of your wish for the above mentioned domains.

### Technology



Our preferred partner in the field of technology offers professional support for lighting, sound and stage installation.  
On request we provide the contact information.

### Interior & Furniture



Whether classical seating arrangement for a gala or creative decoration, modern lounge furniture or an individual mixture of seating arrangements – our preferred partner is pleased to accomplish the whole interior design for you!

### Photography



The great and small moments of the event you planned in detail will stay in mind for a long time.  
To keep all the wonderful moments of the day not only in mind, our photography partner preserves these special moments on meaningful pictures.



# Große Orangerie

SCHLOSS CHARLOTTENBURG

## Menu Packages

In cooperation with our first-class catering partners, we are happy to arrange your individual menu according to your wishes. Or would you like to organise your own catering service according to your special preferences? No matter what, we try our best to make all your wishes come true.



### 3-Course-Menu

from about € 91,- up to € 105,- per capita  
(plus VAT 19%)



### Buffet

from about € 89,- up to € 119,- per capita  
(plus VAT 19%)

Additional menu variations or other extras on request

Appetiser, Finger Food with the appetiser, midnight snack, open bar

The menu package\* includes the following services:

- ✓ One menu option
- ✓ Beverage package
- ✓ All the additional costs (the service personnel for the event, the set-up and dismantling, the service and kitchen equipment, the transport)

The offered package is calculated for a minimum of 100 people and may be recalculated in case of deviations.

Detailed overview of the costs on request.

\* the venue rent is not included



# Große Orangerie

SCHLOSS CHARLOTTENBURG

## How to get here

Große Orangerie Berlin  
Spandauer Damm 22-24  
14059 Berlin

Autobahn	A 100	5,5 km
Train Stations	Berlin Main Station	6,0 km
Rapid-transit railway	Westend	1,0 km
Underground railway	Station "Richard-Wagner-Platz"	1,0 km
Airport	TXL Berlin Brandenburg	

Up to 120 public parking lots right outside the Orangerie Berlin and up to 80 parking lots, which you can rent from us exclusively.

Several bus lanes lie right in front of the park entrance, to ensure even group arrivals.

